

Sustainability Team

Scope of Services Overview



Foreman Roberts is a leading Building Engineering Services Consultancy. The company employs 200 staff located in London, Oxford, Manchester and the Isle of Man. We also have an extensive international 'Partner Network' through which many overseas projects are delivered. The company carries full accreditation for Quality Assurance ISO 9001.

About Our Team

Foreman Roberts Sustainability Team is a specialist group within the practice developed in response to increasing demands for sustainable solutions in the built environment.

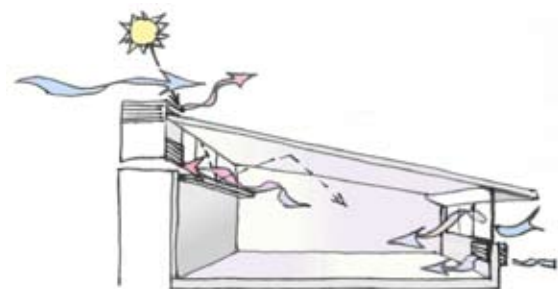
The UK Government's legal commitment to the Kyoto protocol and the recent prominence of the Stern Report on the economic impact of climate change (2007), has led to the need for sustainability to be of paramount importance to all new building projects and major refurbishments.

Increasingly the team is employed independently to assist clients and their design teams to demonstrate compliance with local authority requirements for sustainability and planning.

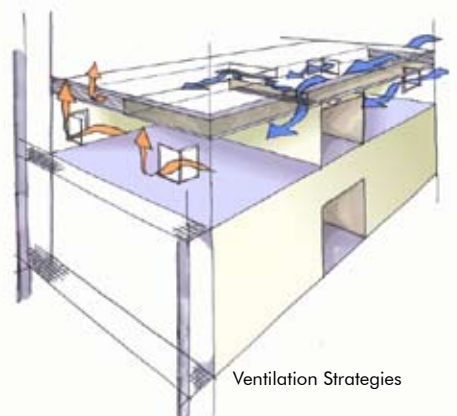
Our strategy has been to provide support for growing demands to reduce the carbon footprint of buildings.

This is achieved by bridging the gap between the architect and the traditional role of building services consultants by designing with a holistic approach.

“ concentrating on conceptual design and particularly the sustainability aspects of building design ”



Environmental Concepts



Ventilation Strategies

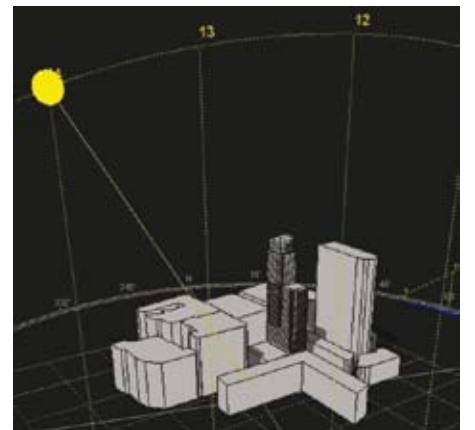


Within the Foreman Roberts Sustainability Team we can undertake a broad range of services to ensure the success of projects. We have the expertise to develop innovative yet practical design solutions for the economic integration of sustainable design into a 'future focused' generation of energy efficient buildings. We have the experience to guide and advise our clients through the following topics:

- Early environmental design guidance (site selection, massing studies and early concept advice)
- Corporate social responsibility policies (guidance on environmental aspects)
- Building regulations Part L1 and L2 energy assessments, SAP certificates (using NHER) and NCM compliant L2 assessments using TAS and total carbon energy assessments
- BREEAM & Code for Sustainable Homes assessments and design advice.
- Dynamic 3D thermal and ventilation modelling
- Sunlight and daylight impact studies using Ecotect.
- Interior daylight quality assessment including photo-realistic visualisation using LBNL radiance.
- Compliance and Carbon Management of existing buildings
- Waste management and site waste advice
- Advice on materials selection using the Green Guide and Envest.
- Green interior design
- Renewables Studies - investigating the viability of on-site renewables and their integration into the building built form.
- Guidance in relation to GLA energy reports and London Plan policies
- The use of low carbon technologies such as CHP, Trigenation, fuel cells etc.
- Site wide energy infrastructure and load profile studies plus negotiations with Energy Service Companies (ESCOs)
- Water efficiency and rainwater/ grey water recovery systems.
- Sustainable Urban Drainage Systems (SUDS)
- Post occupancy evaluation
- Energy Performance Certification and Display Energy Certification for buildings



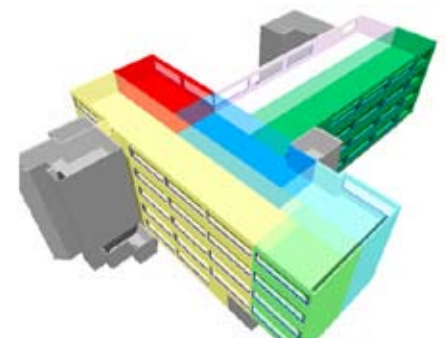
Interior Daylight Assessments



Solar Shading Studies



EPC Certificates



Dynamic Thermal Simulation using TAS models

please contact :

Foreman Roberts
 9 Kings Head Yard
 London SE1 1NA
Tel : +44 (0)207 089 8900
Fax : +44 (0)207 089 8910
www.foremanroberts.com



Gary Saunders
Email: gsaunders@foremanroberts.com
Tel: +44 (0)20 7089 8900
Mob: +44 (0)7921 489 575